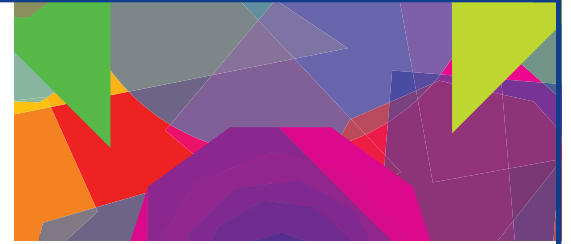




**bright house**

NETWORKS



## 2008 Holiday Card

# Design

# CONTEST

**Show off your art talent and you could win a \$500 educational grant!**

Bright House Networks seeks original artwork for its 2008 Holiday Card. We're looking for creativity, energy, color, enthusiasm and seasonal appropriateness. Entries should also highlight Bright House Networks' mission of community involvement.

The 2008 Holiday Card Design Contest is open to students, from kindergarten through grade 12 in public and private schools, in central Indiana.

### CONTEST RULES

Participants do not need to be Bright House Networks subscribers. Children and family members of Bright House Networks employees are not eligible to enter.

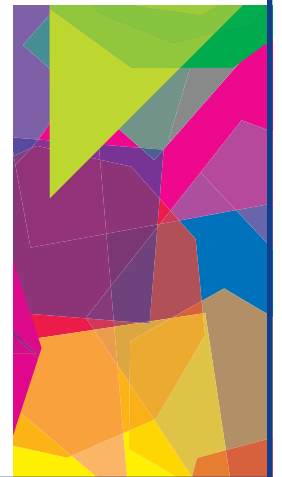
Students are encouraged to use the complete space allowed in this submission form to create their Holiday Card art. All creative forms are encouraged, including watercolor, crayon, marker and mixed media.

All entries must be original artwork. Entries cannot be returned.

Winning entries become the sole property of Bright House Networks and will be printed and distributed by Bright House Networks. Winners will be notified by mail.

One winner from each category – elementary, middle school and high school – will be named and receive a \$500 educational grant.

Each winner must sign a waiver certifying the authenticity of originality. Parent(s) of winning entries must sign a release allowing their child's first name, age and school name be printed on the back of each card.





## Create your original artwork in the box below.

*Send completed entries to:*

**Holiday Card Contest  
c/o Coles Marketing  
Communications  
3950 Priority Way, Suite 106  
Indianapolis, IN 46240**

**All submissions must be  
original artwork. Entries  
must be postmarked by  
midnight, Nov. 25, 2008.**

**(CIRCLE ONE)**

**ELEMENTARY SCHOOL CONTEST**  
Entrants must be currently  
enrolled as kindergarten  
through fifth-grade students.

**MIDDLE SCHOOL CONTEST**  
Entrants must be currently  
enrolled in grades 6-8.

**HIGH SCHOOL CONTEST**  
Entrants must be currently  
enrolled in grades 9-12.

Child's Name \_\_\_\_\_ Grade Level \_\_\_\_\_

School \_\_\_\_\_

Home Address \_\_\_\_\_ Phone \_\_\_\_\_

Parent Signature \_\_\_\_\_